

PANCHSHEEL
HYUNDA at Gr. N  IDA
2/3 Bedroom Homes Sector 1

**Homes as close to Noida
as your loved ones**

Site Plan



	2 BED +2 TOI (MIG-I) - 755		2 BED +2 TOI (MIG-IV) - 1000
	2 BED +2 TOI (MIG-II) - 755		3 BED +2 TOI (HIG-IA) - 1225
	2 BED +2 TOI (MIG-III) - 900		3 BED +2 TOI (HIG-IB) - 1250
	3 BED +3 TOI (HIG-II) - 1550		



Features

Peace, Power & Connectivity

- Vastu compliance - being a rectangular plot, positive vibes gather all around
- Landscaped greens with tropical and exotic plants
- Water bodies
- Green stretches – smooth, wide jogging tracks
- 4 Km from Crossings Republik, NH-24
- 8 Km from Noida, Sec-71
- 4 Km from Noida, Sec-121
- 11 Km from Noida City Centre Metro Station
- 8.5 Km from Sai Mandir
- 6.5 Km from Indirapuram, Ghaziabad

Relax, Rejuvenate & Recharge

- Pool with heating facility for round the year use
- Indoor games: badminton, skating rink, table tennis, billiards
- Outdoor games: basket ball & football
- Fitness centre with spa & jacuzzi
- Yoga and meditation
- Beauty salons
- **U.S.P. - 'SPARK'** - the club, unique in terms of facilities, fitness and entertainment options

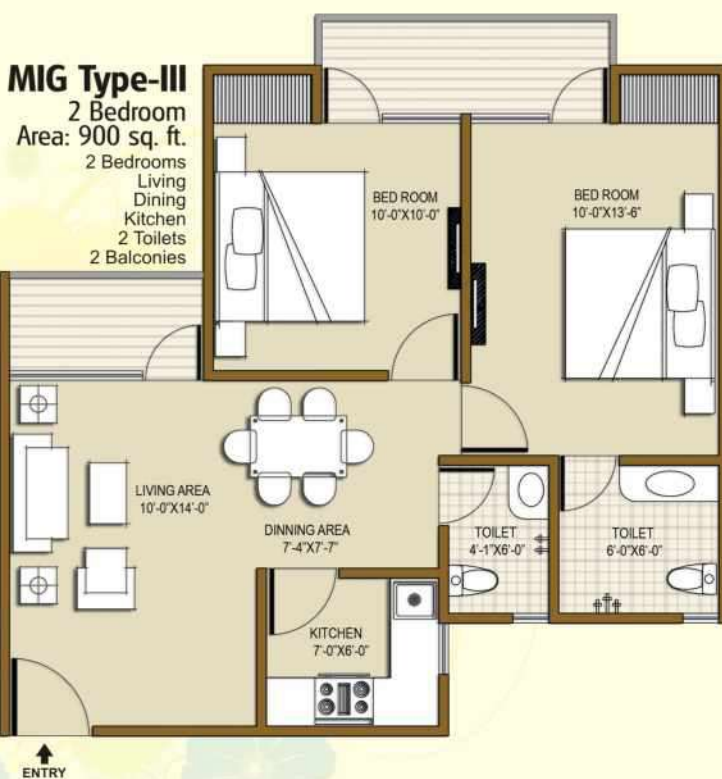
Planned Surroundings & Conveniences

- Intercom facility for security
- Garbage Chutes
- Energy efficient building
- Rain water harvesting
- Centralized water waste management
- Emergency alarm system
- Sewage treatment plant
- Well managed basement and open car parking
- 24 hrs. water supply
- Power back-up

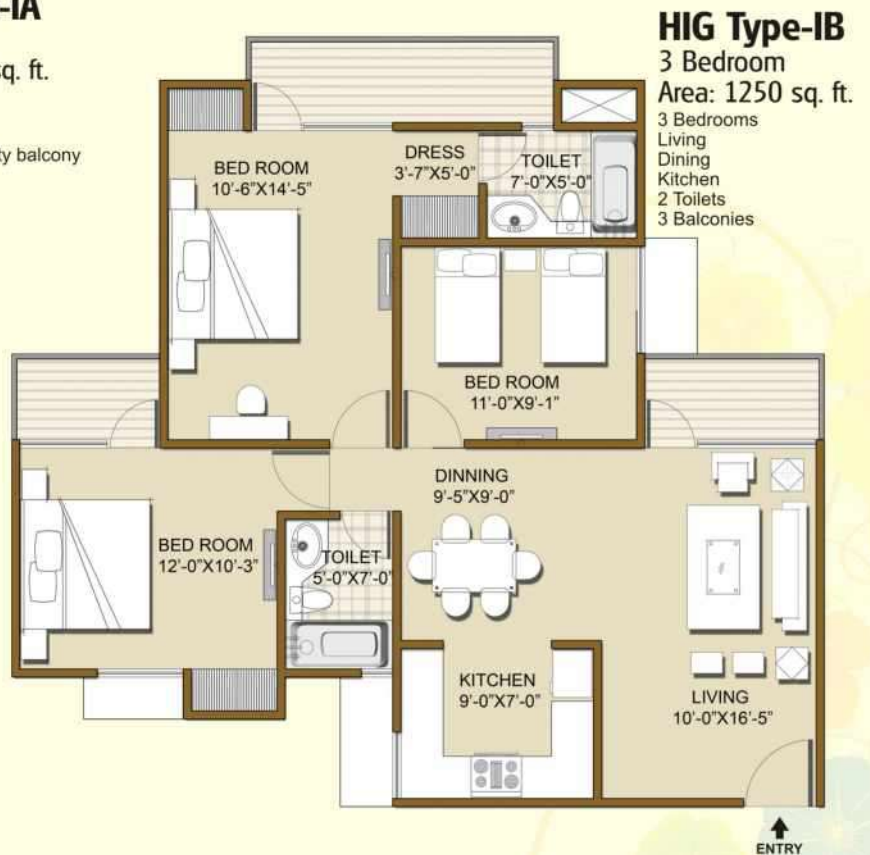
Unique Features & Facilities

- Play school and crèche
- Convenient stores
- Amphitheatre
- Banquet
- 3 tier security
- Guard room and all essential services
- **On call services:**
 - laundry services • grocery • taxi • health care

Floor Plan



Floor Plan



Specifications That Enhance The Interiors

STRUCTURE: Earthquake resistant R.C.C. framed structure certified by IIT.

FLOORING: Vitrified tiles floorings and European laminated wooden flooring in master bedroom.

DOORS\WINDOWS: All external door and window frames in powder coated aluminum.
Decorative doors with hard wood at main entrance and rest decorative flush doors duly polished.

KITCHEN: Granite working platform with 2 ft. high glazed ceramic tiles above it with stainless steel sink.

WATER SUPPLY: Underground and overhead water tanks with pumps for 24 hours uninterrupted water supply.

TOILETS: Provision for Hot & Cold water system. Glazed tiles in pleasing colours on walls up to door level. European W.C.'s wash basins & cisterns in white shade.

INTERNAL FINISH: All internal walls plastered & painted in off white shade of oil bound distemper, Plaster of Paris punning & Cornices in drawing/dining room and bedrooms.

EXTERNAL FINISH: Most modern & elegant permanent outer finish with high quality texture paint.

ELECTRICAL: ISI copper wiring in P.V.C. concealed conduit. Provision for adequate light and power points as well as telephone & TV outlets with protective M.C.Bs.

HARDWARE: All fittings with aluminum powder coated materials.



PANCHSHEEL
HUNISH
 2/3 BR Homes Sec. 1, Gr. Noida



LOCATION ADVANTAGES:
 4 Km from Crossings Republik, NH-24 • 8 Km from Noida, Sec-71
 4 Km from Noida, Sec-121 • 11 Km from Noida City Centre Metro Station
 8.5 Km from Sai Mandir • 6.5 Km from Indirapuram, Ghaziabad



Panchsheel Buildtech Pvt. Ltd.
 An ISO 9001 : 2008 Company

Corporate Office: H-169, Sector-63, Noida-201301

Sales enquiries: 0120-4777777 (15 Lines) • Fax: 0120-4777798

Site Office: Plot No. 8, Sector-1, Gr. Noida • Email : sales@panchsheelgroup.com • Website : www.panchsheelgroup.com

The brochure is purely conceptual, and not a legal offering. All rights reserved. No part of this brochure may be reproduced or transmitted in any form, or by any means, electronics, mechanical, photocopying, or otherwise without prior permission of Panchsheel Buildtech Pvt. Ltd. Specifications are subject to change without prior notice.